



DL

C16

6000/3

DL3-C16

DL3-C16

C16

DL

N

DL

DL8NL-40

C16 Type AC

400/415V~ 6000/3

50/60Hz I_m=3000A

I_{Δn}=0.03A

AS/NZS 61009-1

IN 1 2 3 4 5 6

TL

O-OFF O-OFF O-OFF

Test Monthly

N

L N

C16

t ≤ 0.1s

230/240V~

I_{Δn} 30mA

000A

AS/NZS 61009.1 N136

SIMULATED CHANGE
OVER SWITCH IN 1
↑ IN 2
UEEEL0047

- UEEEL0008- LIGHTING
- UEEEL 0009- HEATING
- UEEEL 0010- SOCKET OUTLET
- UEEEL 0047- ALTERNATIVE SUPPLY
- UEEEL 0003- PROTECTION
- UEEEL 0012- WIRING
- UEEEL 0023- TERMINATION

HEATING + THERMOSTAT

LIGHTING

HEATING POWER

DETA DETA
6704

MAIN SWITCH

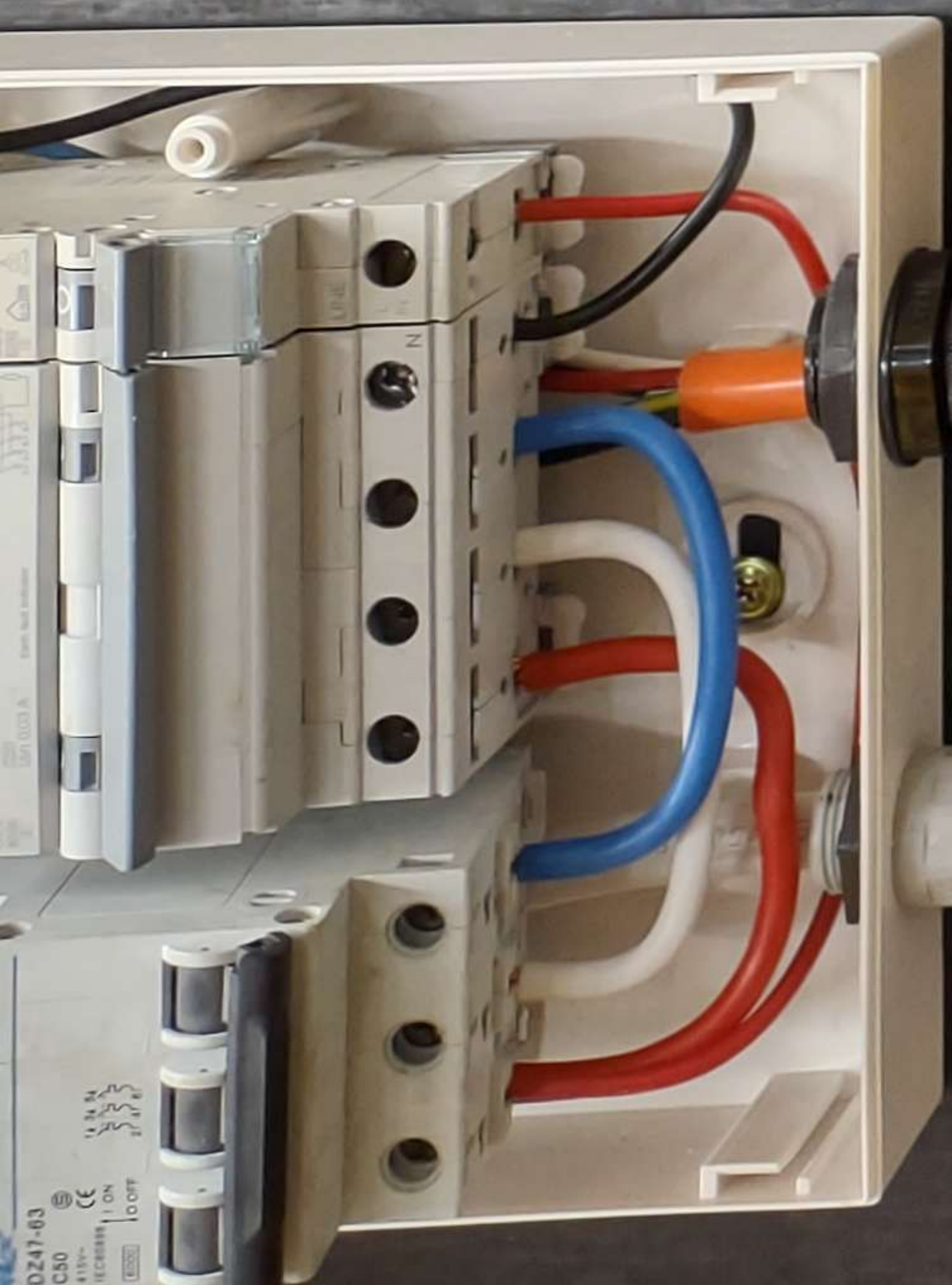
Lighting switch

Heating power outlets

Socket outlets

Fluorescent light fixture

LED light fixtures







NOTICE
PLEASE KEEP
AREA CLEAR

A wooden board with various electrical components. On the left, a white transformer is labeled "CIRCUITRY CHANGE OVER SWITCH IN 1" and "MODE 200V". Below it is a fluorescent light fixture. In the center, there are two circular LED lights, a switch labeled "LIGHTING", and a power outlet labeled "HEATING POWER". To the right, there is a power outlet labeled "HEATING & THERMOSTAT". The board has several labels: "LEVEL 0000 - LIGHTING", "LEVEL 0001 - HEATING", "LEVEL 0002 - SOCKET OUTLET", "LEVEL 0003 - ALTERNATIVE SUPPLY", "LEVEL 0004 - DISTRIBUTION", "LEVEL 0005 - WIRING", "LEVEL 0006 - TERMINATION", "HEATING & THERMOSTAT", "LIGHTING", and "HEATING POWER".

A wooden board with electrical components, partially visible on the right side. It has labels: "LEVEL 0007 - ...", "LEVEL 0008 - ...", "LEVEL 0009 - ...", "LEVEL 0010 - ...", "LEVEL 0011 - ...", "LEVEL 0012 - ...", "LEVEL 0013 - ...", "LEVEL 0014 - ...", "LEVEL 0015 - ...", "LEVEL 0016 - ...", "LEVEL 0017 - ...", "LEVEL 0018 - ...", "LEVEL 0019 - ...", "LEVEL 0020 - ...", "LEVEL 0021 - ...", "LEVEL 0022 - ...", "LEVEL 0023 - ...", "LEVEL 0024 - ...", "LEVEL 0025 - ...", "LEVEL 0026 - ...", "LEVEL 0027 - ...", "LEVEL 0028 - ...", "LEVEL 0029 - ...", "LEVEL 0030 - ...", "LEVEL 0031 - ...", "LEVEL 0032 - ...", "LEVEL 0033 - ...", "LEVEL 0034 - ...", "LEVEL 0035 - ...", "LEVEL 0036 - ...", "LEVEL 0037 - ...", "LEVEL 0038 - ...", "LEVEL 0039 - ...", "LEVEL 0040 - ...", "LEVEL 0041 - ...", "LEVEL 0042 - ...", "LEVEL 0043 - ...", "LEVEL 0044 - ...", "LEVEL 0045 - ...", "LEVEL 0046 - ...", "LEVEL 0047 - ...", "LEVEL 0048 - ...", "LEVEL 0049 - ...", "LEVEL 0050 - ...", "LEVEL 0051 - ...", "LEVEL 0052 - ...", "LEVEL 0053 - ...", "LEVEL 0054 - ...", "LEVEL 0055 - ...", "LEVEL 0056 - ...", "LEVEL 0057 - ...", "LEVEL 0058 - ...", "LEVEL 0059 - ...", "LEVEL 0060 - ...", "LEVEL 0061 - ...", "LEVEL 0062 - ...", "LEVEL 0063 - ...", "LEVEL 0064 - ...", "LEVEL 0065 - ...", "LEVEL 0066 - ...", "LEVEL 0067 - ...", "LEVEL 0068 - ...", "LEVEL 0069 - ...", "LEVEL 0070 - ...", "LEVEL 0071 - ...", "LEVEL 0072 - ...", "LEVEL 0073 - ...", "LEVEL 0074 - ...", "LEVEL 0075 - ...", "LEVEL 0076 - ...", "LEVEL 0077 - ...", "LEVEL 0078 - ...", "LEVEL 0079 - ...", "LEVEL 0080 - ...", "LEVEL 0081 - ...", "LEVEL 0082 - ...", "LEVEL 0083 - ...", "LEVEL 0084 - ...", "LEVEL 0085 - ...", "LEVEL 0086 - ...", "LEVEL 0087 - ...", "LEVEL 0088 - ...", "LEVEL 0089 - ...", "LEVEL 0090 - ...", "LEVEL 0091 - ...", "LEVEL 0092 - ...", "LEVEL 0093 - ...", "LEVEL 0094 - ...", "LEVEL 0095 - ...", "LEVEL 0096 - ...", "LEVEL 0097 - ...", "LEVEL 0098 - ...", "LEVEL 0099 - ...", "LEVEL 0100 - ...".