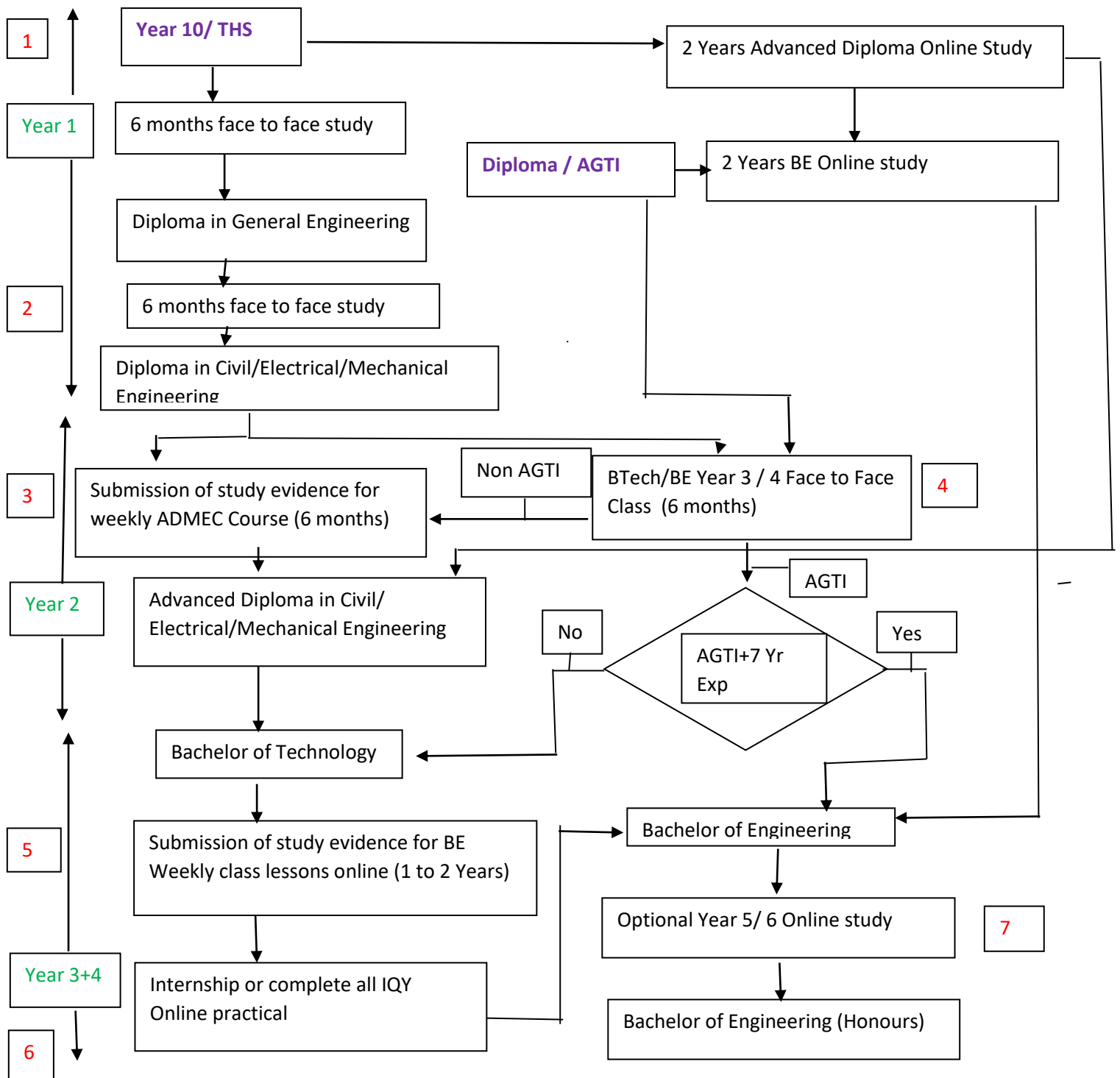


IQY Career Study Pathways



Note (1)- When the students complete Diploma in Electrical/Civil/Mechanical Engineering,

They can select two way (1) Study weekly online ADMEC Lessons , submit the study evidence and then complete Advanced Diploma in Electrical/Civil/Mechanical Engineering OR continue to attend BTEch/BE Year 3/ 4 Face to Face class for 6 months and then) Study weekly online ADMEC Lessons , submit the study evidence and complete Advanced Diploma in Electrical/Civil/Mechanical Engineering + Bachelor of Technology (Some BE Level Weekly Online study is also required).

Note (2) The students who attend BTEch/BE Year 3/4 Face to Face class may consist of those with AGTI and those with Non AGTI. If the student holds AGTI, after BTEch/BE Year 3/4 Face to Face class, they can complete BTEch but those who do not have AGTI need to follow NON AGTI direction and need to weekly online ADMEC Lessons , submit the study evidence and complete Advanced Diploma in Civil/ Electrical/Mechanical Engineering and BTEch.

Note 3 All students except AGTI with 7 Years experience must attend Weekly BE class lesson online for minimum 1 year and submit the study evidence to complete BE.