

ISOGEN I-Configure Webinar

The archived I-Configure webinar talks about the ISOGEN I-Configure graphic user interface (GUI) features and the differences and similarities between I-Configure and Project Manager (PipMan) applications. You learn how to setup, navigate, and edit Styles and how to successfully migrate projects from ISOGEN Project Manager.

I-Configure Overview

ISOGEN is the industry de-facto standard supplied by all major plant design software vendors and produces automatic isometrics from design systems. I-Configure uses ISOGEN to create Isometric drawings and reports. I-Configure can create and manage Isometric Directories, Projects and Styles used by Project Manager. The following is included with I-Configure:

- Support for Projects and Styles created in Project Manager (PipMan).
- Object -based user interface used to configure ISOGEN control files.
- Explorer windows to navigate the available Projects and Styles.
- Four Wizards to quickly set-up and configure Styles.
- XML files for storage of Project and Style information.
- Built-In drawing previewer for on-the-fly modifications to Styles.
- Password protection to avoid unauthorized alterations to Projects and Styles.

Table of Content

▪ I-Configure Installation	Page 2
▪ I-Configure Tips.....	Page 2-4
▪ Create an Isometric Directory	Page 4-5
▪ Create a Project and Styles	Page 5
▪ Template Location.....	Page 6
▪ XML Files Store Data.....	Page 6
▪ Export Styles for use in CADWorx.....	Page 6-8
▪ ISOGEN Control Files.....	Page 8-9
▪ Options File	Page 9-10
▪ Webinar Audience Questions	Page 10-11

I-Configure Installation

Click on the following links to install each product. Please read though the tips listed in this document before creating or modifying any I-Configure Isometric Directory, Project or Style.

1. Install CADWorx Plant Professional 2010 September 4th build or later.
<http://www.coade.com/uploads/cadworx/2010/>
2. Install I-Configure
<C:\CADWorx 2010\Plant\Isogen\I-Configure\setup.exe>
3. Install Autodesk Volo View
<http://images.autodesk.com/adsk/files/vv3setup.exe>
4. Run Isogen Bat File
<C:\CADWorx 2010\Plant\Support\ISOGEN.BAT>

I-Configure Tips

The following is information on problems you may encounter. This information is to help you keep these errors from occurring. If you have additional problems with the installation of I-Configure please email support is at cadworx@intergraph.com.

Compatibility for CADWorx and CAESAR

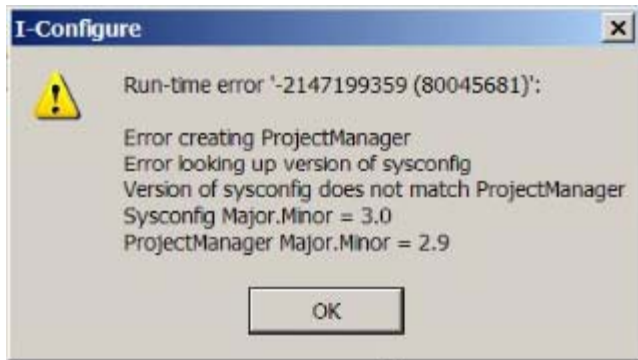
I-Configure software will work with both CADWorx and CAESAR. To have this function a user will need to install software on separate computers. One computer will need to run CADWorx + I-Configure and second computer will need to run CAESAR + I-Configure.

One computer with CADWorx and CAESAR

To avoid issues, if you are using CADWorx and CAESAR on the same computer then you should install CADWorx Plant Professional first and install CAESAR last. The following errors are displayed because CAESAR was installed first. These errors will be resolved if CAESAR is uninstalled and I-Configure for CADWorx is repaired. Remember to install CAESAR last or install it on a separate computer.

These errors also appear if you do not run the ISOGEN.BAT file. Refer to the following document for more information: C:\CADWorx 2010\Plant\Isogen\I-Configure_ReadMe.htm

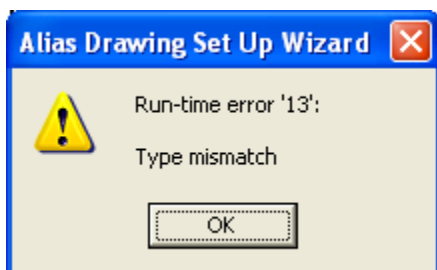
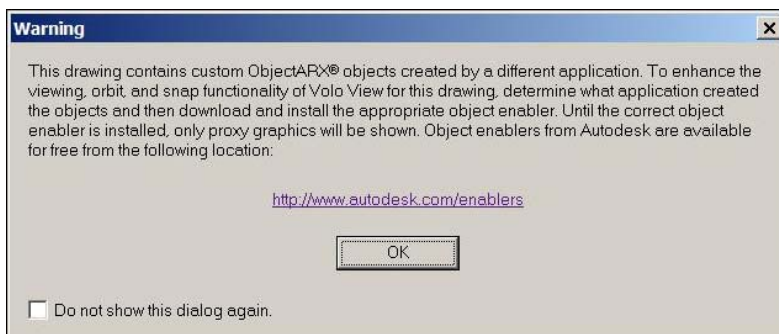




The Drawing Setup Wizard

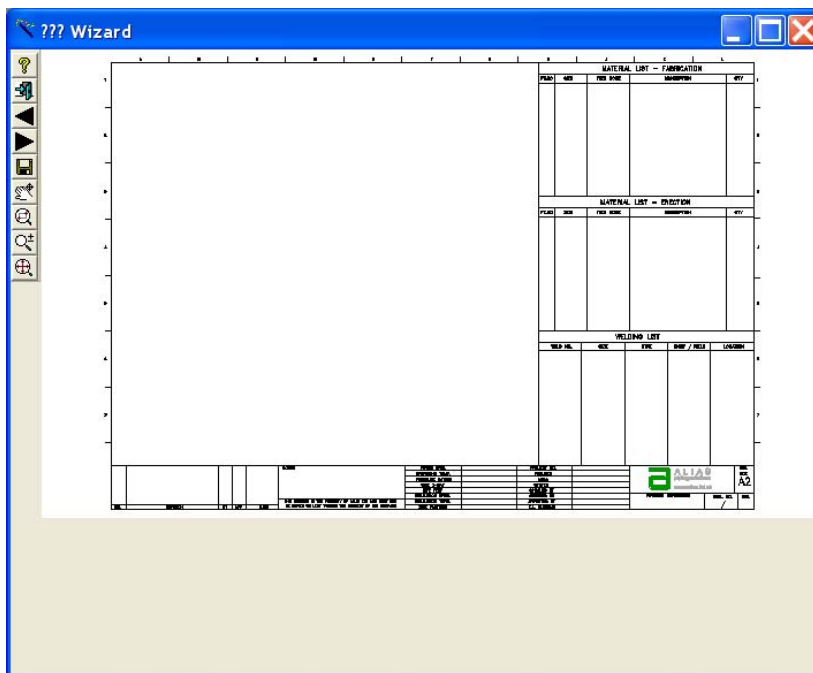
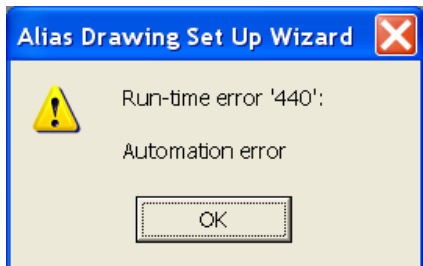
Object Enabler Error

The Drawing Setup Wizard inside I-Configure will have problems if the backing sheet (AutoCAD template) contains custom ObjectARX objects. The following messages are displayed if custom objects are present. To avoid having issues you should purge the title block of custom objects. You may also download the correct object enabler from the Autodesk website.



Autodesk AutoCAD File Format Error

The Autodesk Volo View inside I-Configure can only preview an AutoCAD R12 DXF, AutoCAD 2000 DWG and AutoCAD 2004 DWG file. The Drawing Setup Wizard will NOT preview an AutoCAD 2007 DWG, AutoCAD 2010 DWG or anything later. The following error messages will appear if you are not using the correct file format. If you get this error then update your drawing file type and restart I-Configure. The Drawing Setup Wizard will not display correctly until you restart:



Create an Isometric Directory

New Isometric Directory

Select File>New>Isometric Directory or, click the New Isometric Directory icon on the Toolbar. Once the Isometric Directory is created, it is then necessary to create a Project.

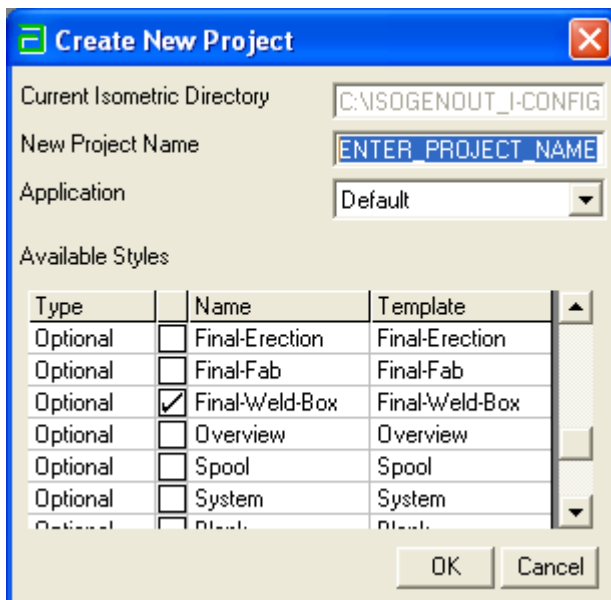


Existing Isometric Directory

If you already have an Isometric Directory select the Project List Files by going to File>Connect to Isometric Directory>ProjectList.xml. This helps users easily connect and disconnect to existing Isometric directories on the network.

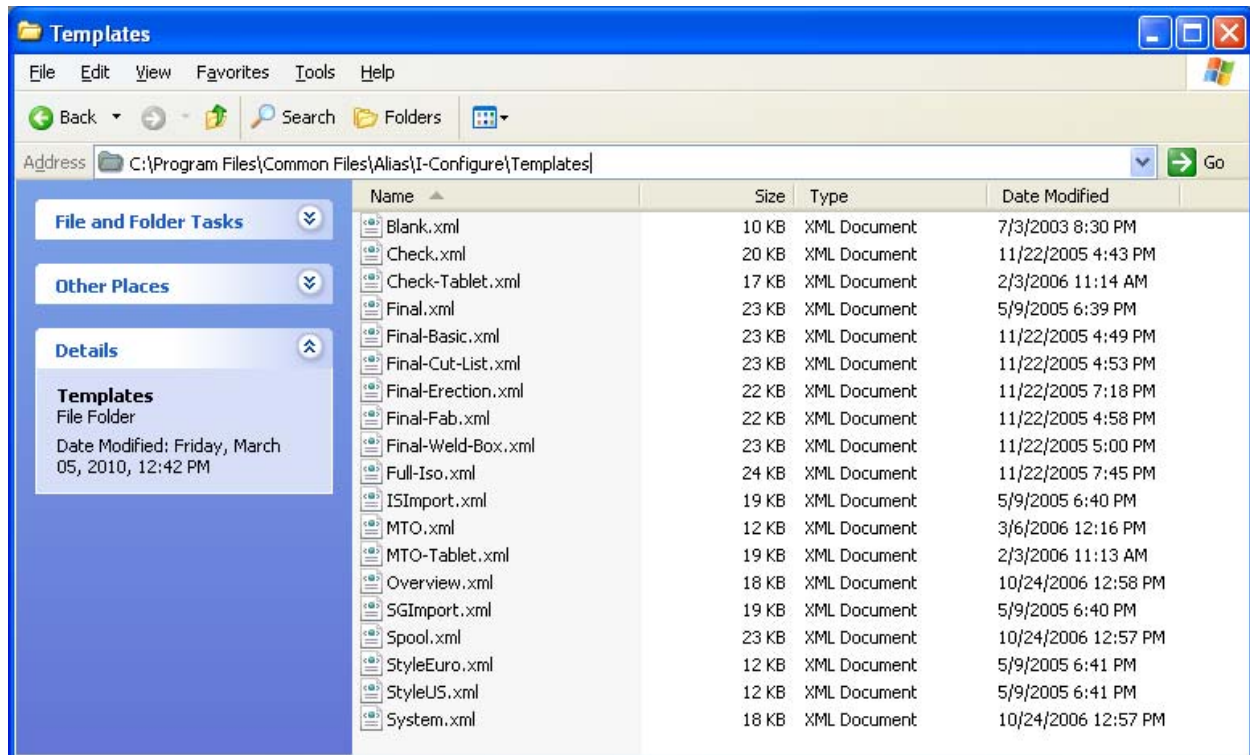
Create a Project and Styles

Select File>New>Project or, click the Create New Project icon on the Toolbar. On the Create New Project dialogue, enter a name for the Project in the New Project Name field. Select the Styles required by checking or un-checking those available. Click OK and the Project and Styles are created.



Template Location

To help users get started with I-Configure, a set of template Styles are supplied. The templates can be found at: C:\Program Files\Common Files\Alias\I-Configure\Templates. The Templates are stored in XML.

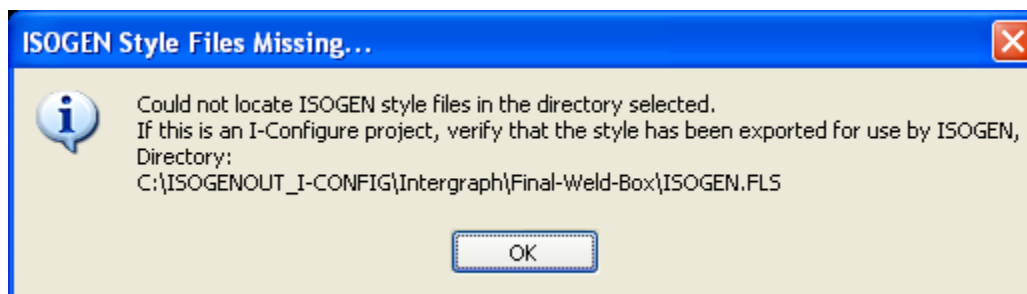


XML Files Store Data

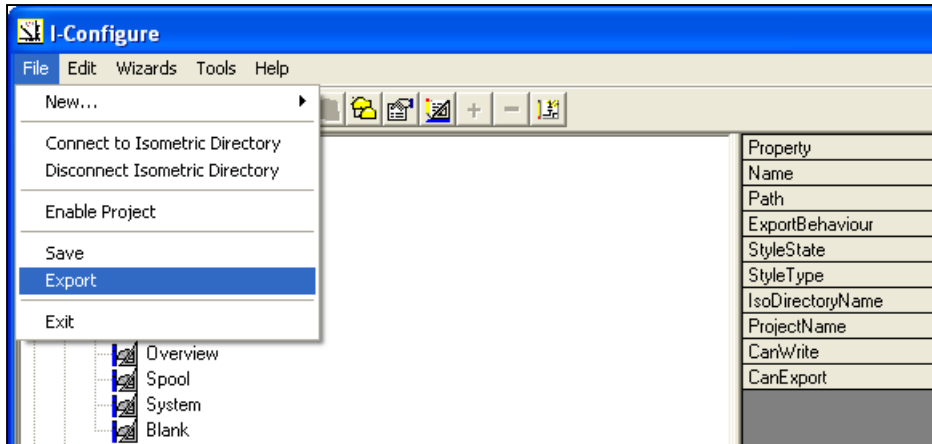
Each Style folder contains a Style.xml file, which is used to store the Style configuration data, e.g. Final-Weld-Basic.xml. Before an application (CADWorx) can use a Style, it must first be exported.

Export Styles for use in CADWorx

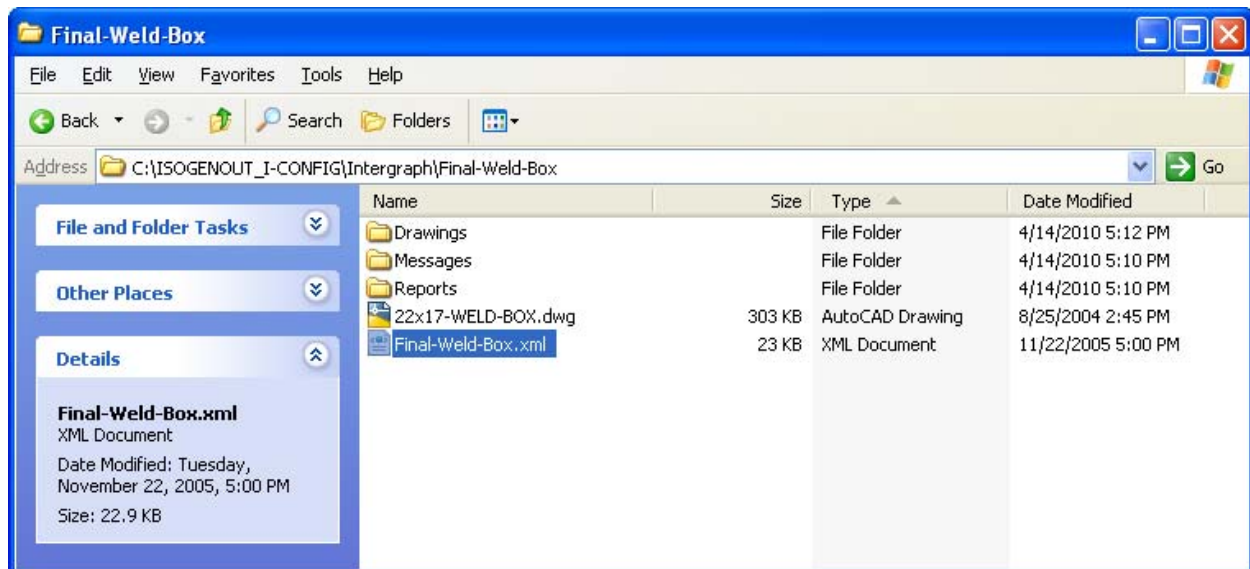
In CADWorx users will see the following message displayed when attempting an ISOGENOUT:



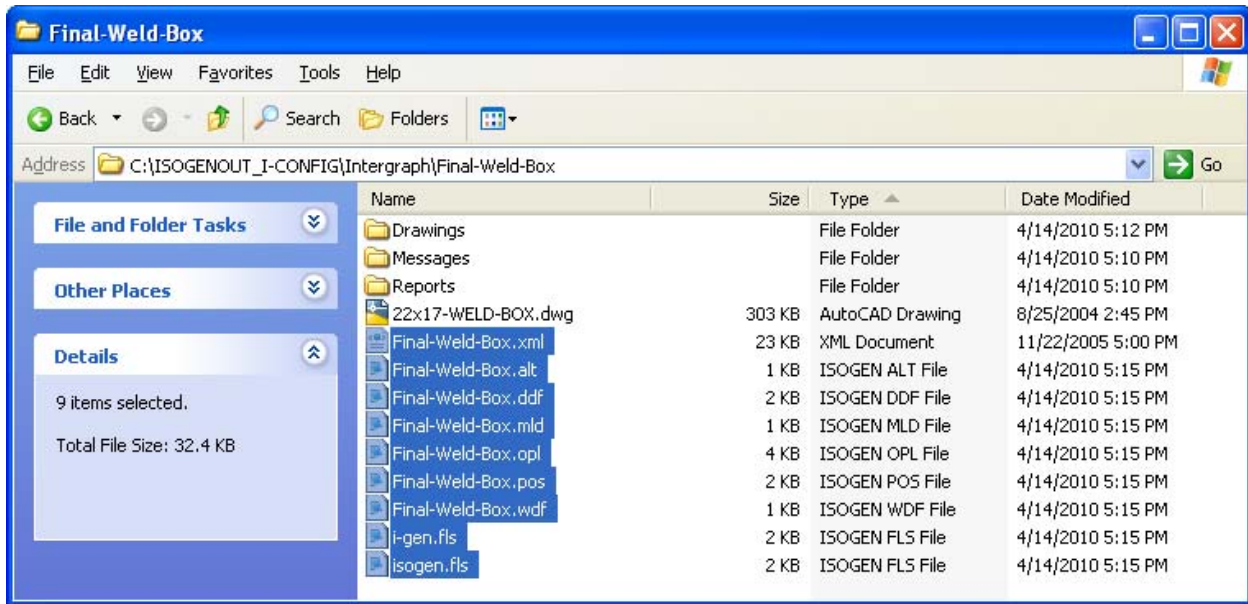
To resolve this issue, inside I-Configure you will need to Export the Style. Performing an export will prepare the I-Configure Style for use inside CADWorx Plant Professional. To export a Style go to File>Export, or click the Export Style icon on the toolbar.



The export of the Style results in the creation of the various ISOGEN control files. The following files are created when the export is performed: *.opl, *.pos, *.alt, *.fls etc. These control files are based on the settings made for the Style in I-Configure. The following is an example of what the style directory contains before the export:

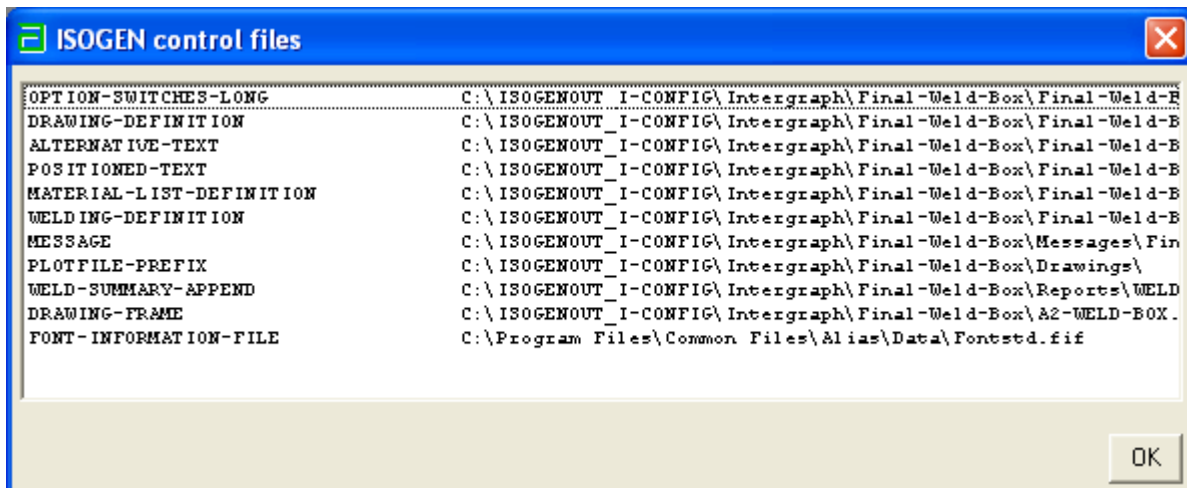


After the export the following Control Files are created. Remember to do an export when you make a change to your Style in I-Configure. If you don't export you will not see your Isometric drawing update.



ISOGEN Control Files

DO NOT modify the following files in notepad. All modifications need to be done inside I-Configure. Changes are saved to the XML style and updates are reflected in CADWorx by an Export in I-Configure. To preview your control files go to: Tools>View Isogen Controls. Double click any of the files shown in the dialogue and this opens for review in a text editor:



The following editor is displayed if you double click on any of the Control Files. This is for review only. Do not make modifications in this text editor.

Switch Number	Switch Setting	Switch Purpose
1	3275	
2	0	
3	0	
4	28	
5	0	
6	112	
7	0	
8	0	
9	100	
10	10	
11	188	
12	10	
13	50	
14	6	
15	0	
16	0	
17	1	
18	1	
19	0	
20	0	
21	0	
22	150150	
23	1300	
24	0	
25	20	

Options File

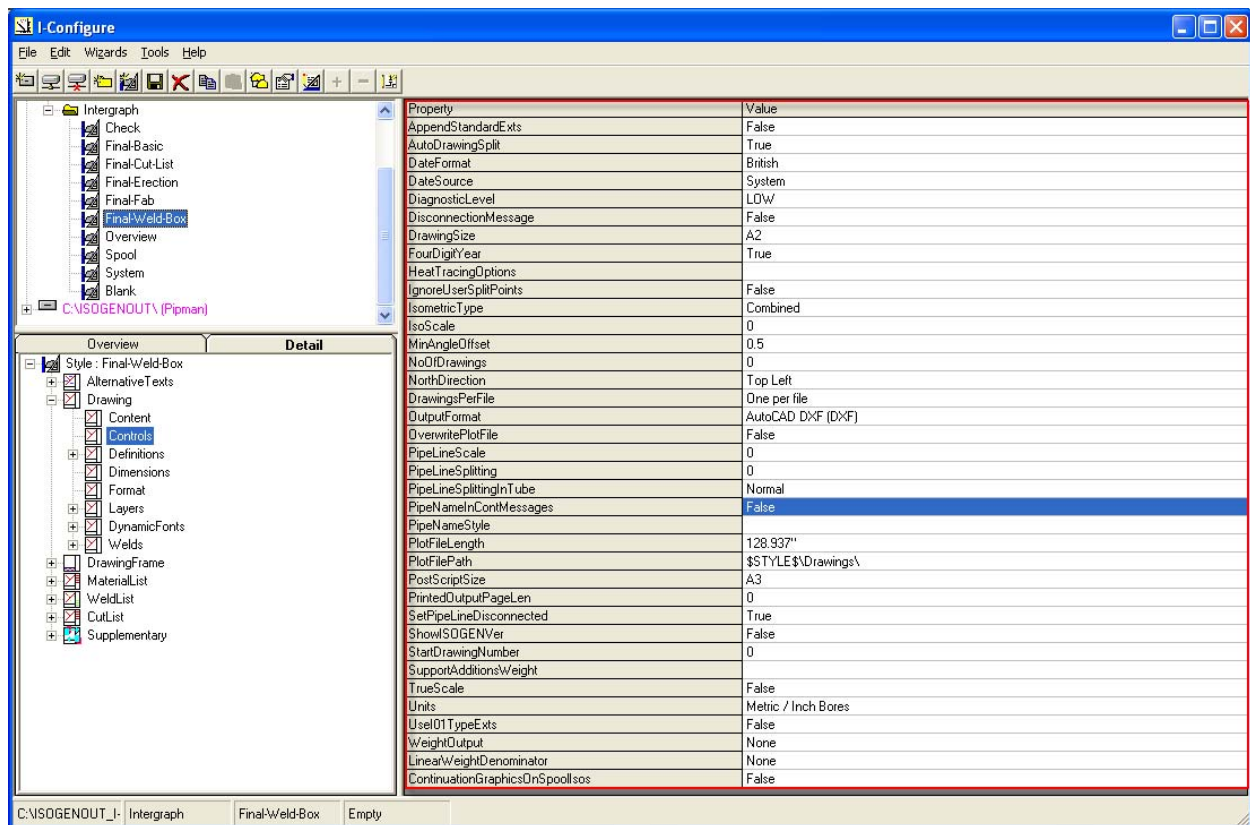
Options File: Search

Options File: The switches previously located in the Options Editor inside Project Manager are now easily accessed by doing a search I-Configure. If you are looking for a known Options Switch then go-to, Tools> Find. In this Find dialog you can query by a text string, an options switch number or a subject. You may double click on the list shown and that item will be displayed in the Properties Panel.

Find dialog box configuration:

- Specify search:
 - Property
 - Option Switch: 38
 - File Section: DDF
- Position: []
- File Section: ISOMETRIC-DEFINITION
- Search Results List:
 - Drawing.Controls.PipeLineSplitting
 - Drawing.Controls.PipeNameInContMessages**
 - Drawing.Controls.PipeNameStyle
 - Drawing.Controls.ContinuationGraphicsOnSpoollos

The following is the Properties Panel:



Webinar Audience Questions

Q: Is there a way to download this webinar?

A: Yes, the recorded version of the webinar will be posted at our Insider blog.

Q: Where exactly does one find the insider blog?

A: <http://coade.typepad.com/>

Q: Is there an electronic version of the user guide available to download of I-Configure

A: The Users Guide is available with the install of CADWorx Plant Professional.

Q: During the webinar changed the border to text1 by cancelling when you were showing us.

A: This happened because I did not save change before exiting the Drawing Wizard. On exiting I-Configure the software illustrated in red that it did not know what title block to reference.

Q: What's the use of the isoin/isoout command in the CADWorx as we have ISOGEN module of the CADWorx to generate the isometrics?

A: Iso In (AUTOISO) and Iso Out (ISOOUT) are for Auto Isometric where as the ISOGEN module is for full isometric output.

Q: How can we show an equipment model in isometric drawing generated through ISOGEN?

A: Equipment can only be referenced in ISOGEN. When a CADWorx nozzle connects to an Equipment nozzle the name is automatically referenced in ISOGEN. If any additional detail is need a detail sketch can be used by using the CADWorx Isogen Data Dialog (ICEDIT).

Q: Can you export an I-Configure setup to project manager?

A: Going back to Project Manager is not as seamless as going to I-Configure. You will need to create the Control Files and reconfigure the Project inside Project Manager. To recreate the Control Files you will need to Export the Style inside I-Configure.

Q: Why do you have to export after you do a save in I-configure?

A: The Export command creates the Control Files that CADWorx needs to run a Isometric Drawing.

Q: Is the I-Configure install only available from the CADWorx 2010 CD-ROM or is there an install available as a separate download?

A: I-Configure is available for CADWorx Plant Professional 2010 Users. Make sure you install September 4th build or later.

Q: If CII and CADWorx Plant Pro is installed in the same system so which version of IConfigure to be used?

A: I-Configure will work for CADWorx or CAESAR on the same machine. I-Configure works with one software per machine.

Q: I missed how to get I-Configure or where it might be located on install.

A: The install is located in the following location: <C:\CADWorx 2010\Plant\Isogen\I-Configure\setup.exe>

Q: Does I-Configure need to be installed on all workstations or just for the user that is configuring?

A: I-Configure can be installed on one computer. Inside the CADWorx Configuration file you can control what ISOGEN Styles users should use.