

Network Setup on Additional Computers

After setting up the network on one computer, you can continue with the next computer. You two alternatives: you can use the same network wizard or you can use the setup disk you would have created.

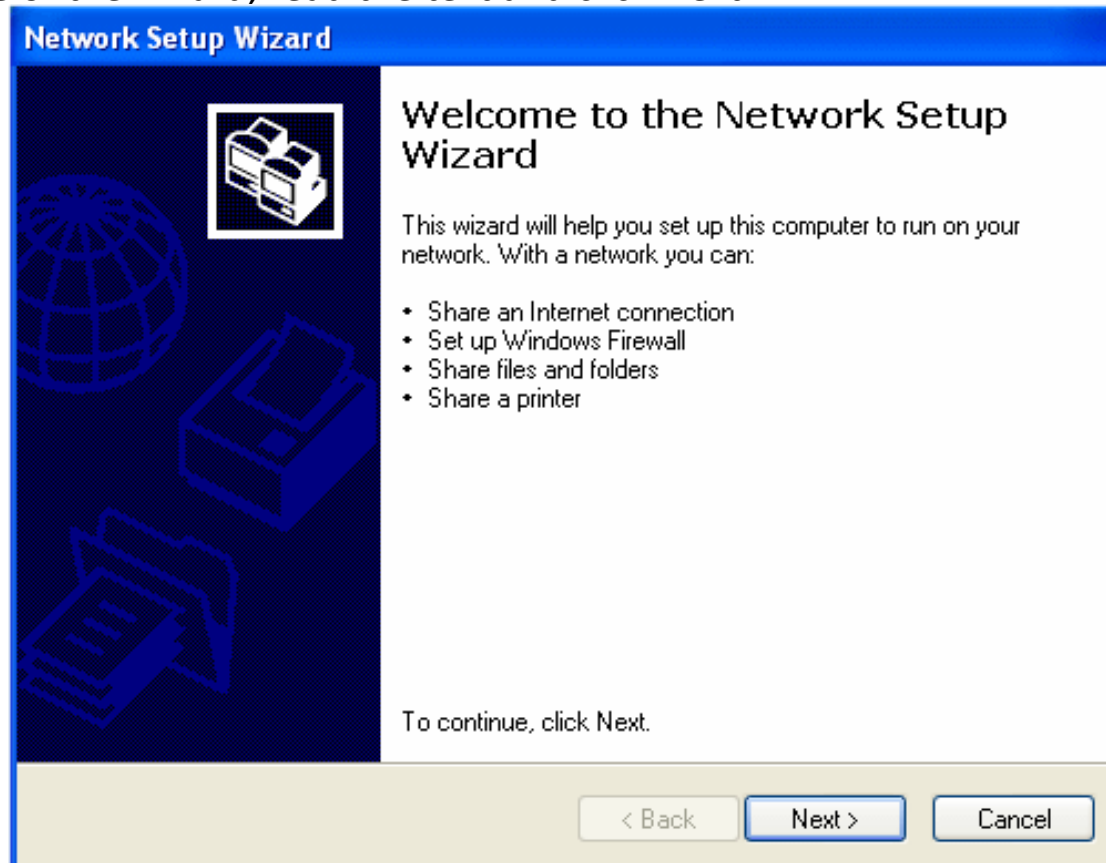
To setup the network on the other computer(s) that will be part of your network:

Practical Learning: Connecting Additional Computers

On the next computer, click Start -> Network Places

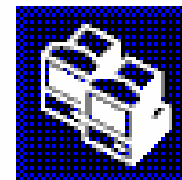
Under Network Tasks, click Set Up A Home Or Office Network

In the first page of the wizard, read the text and click Next



Network Setup Wizard

Before you continue...



Before you continue, review the [checklist for creating a network](#).

Then, complete the following steps:

- Install the network cards, modems, and cables.
- Turn on all computers, printers, and external modems.
- Connect to the Internet.

When you click Next, the wizard will search for a shared Internet connection on your network.

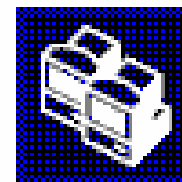
< Back

Next >

Cancel

Network Setup Wizard

Do you want to use the shared connection?



The wizard found a shared Internet connection on the computer "Unknown Internet Connection Sharing device."

Do you want to use the existing shared connection for this computer's Internet access?

- ☒ Yes, use the existing shared connection for this computer's Internet access (recommended)
- ☐ No, let me choose another way to connect to the Internet

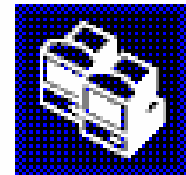
< Back

Next >

Cancel

Network Setup Wizard

Give this computer a description and name.



Computer description:

Examples: Family Room Computer or Monica's Computer

Computer name:

Examples: FAMILY or MONICA

The current computer name is SUZANNE.

Learn more about [computer names and descriptions](#).

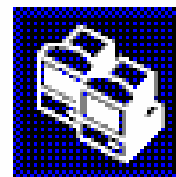
< Back

Next >

Cancel

Network Setup Wizard

Name your network.



Name your network by specifying a workgroup name below. All computers on your network should have the same workgroup name.

Workgroup name:

Examples: HOME or OFFICE

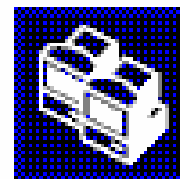
< Back

Next >

Cancel

Network Setup Wizard

Ready to apply network settings...



The wizard will apply the following settings. This process may take a few minutes to complete and cannot be interrupted.

Settings:

Internet connection settings:

Connecting via ICS through:
device

Unknown Internet Connection Sharing

Network settings:

Computer description:

Common Station

Computer name:

CMNSTATION

To apply these settings, click Next.

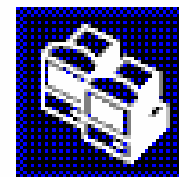
< Back

Next >

Cancel

Network Setup Wizard

To run the wizard with the Network Setup Disk...



Complete the wizard and restart this computer. Then, use the Network Setup Disk to run the Network Setup Wizard once on each of the other computers on your network.

Here's how:

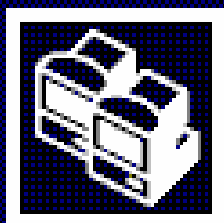
1. Insert the Network Setup Disk into the next computer you want to network.
2. Open My Computer and then open the Network Setup Disk.
3. Double-click "netsetup."

< Back

Next >

Cancel

Network Setup Wizard



Completing the Network Setup Wizard

You have successfully set up this computer for home or small office networking.

For help with home or small office networking, see the following topics in Help and Support Center:

- [Using the Shared Documents folder](#)
- [Sharing files and folders](#)

To see other computers on your network, click Start, and then click My Network Places.

To close this wizard, click Finish.

< Back

Finish

Cancel